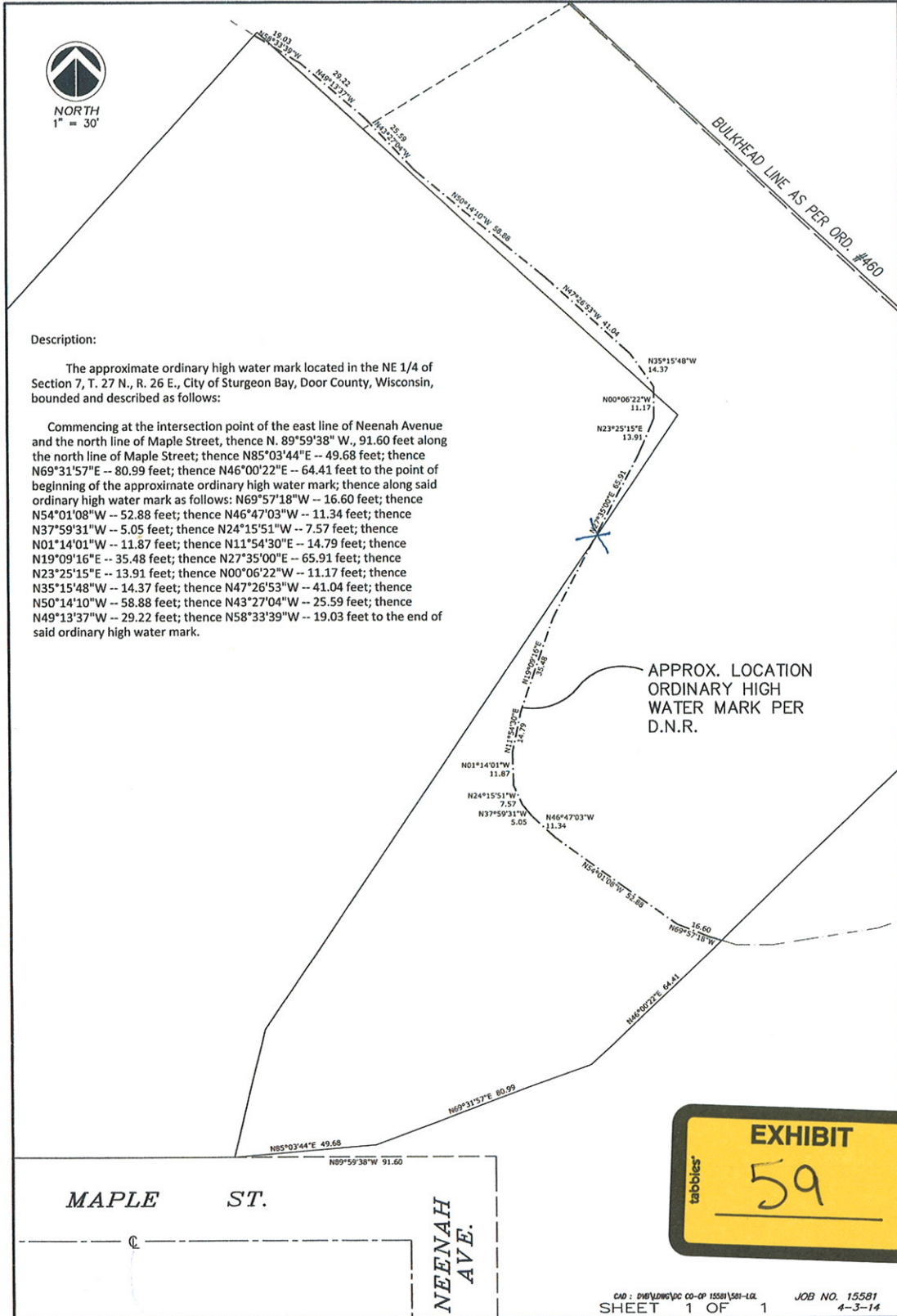


**OLEJNICZAK**  
 DATE: 9-26-16  
 EXHIBIT NO: 9 RPTA: OSB  
 BAY REPORTING SERVICE, INC.



**Description:**

The approximate ordinary high water mark located in the NE 1/4 of Section 7, T. 27 N., R. 26 E., City of Sturgeon Bay, Door County, Wisconsin, bounded and described as follows:

Commencing at the intersection point of the east line of Neenah Avenue and the north line of Maple Street; thence N. 89°59'38" W., 91.60 feet along the north line of Maple Street; thence N85°03'44"E -- 49.68 feet; thence N69°31'57"E -- 80.99 feet; thence N46°00'22"E -- 64.41 feet to the point of beginning of the approximate ordinary high water mark; thence along said ordinary high water mark as follows: N69°57'18"W -- 16.60 feet; thence N54°01'08"W -- 52.88 feet; thence N46°47'03"W -- 11.34 feet; thence N37°59'31"W -- 5.05 feet; thence N24°15'51"W -- 7.57 feet; thence N01°14'01"W -- 11.87 feet; thence N11°54'30"E -- 14.79 feet; thence N19°09'16"E -- 35.48 feet; thence N27°35'00"E -- 65.91 feet; thence N23°25'15"E -- 13.91 feet; thence N00°06'22"W -- 11.17 feet; thence N35°15'48"W -- 14.37 feet; thence N47°26'53"W -- 41.04 feet; thence N50°14'10"W -- 58.88 feet; thence N43°27'04"W -- 25.59 feet; thence N49°13'37"W -- 29.22 feet; thence N58°33'39"W -- 19.03 feet to the end of said ordinary high water mark.

**EXHIBIT**  
 59