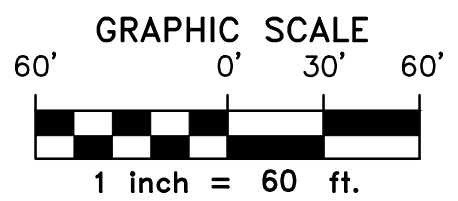
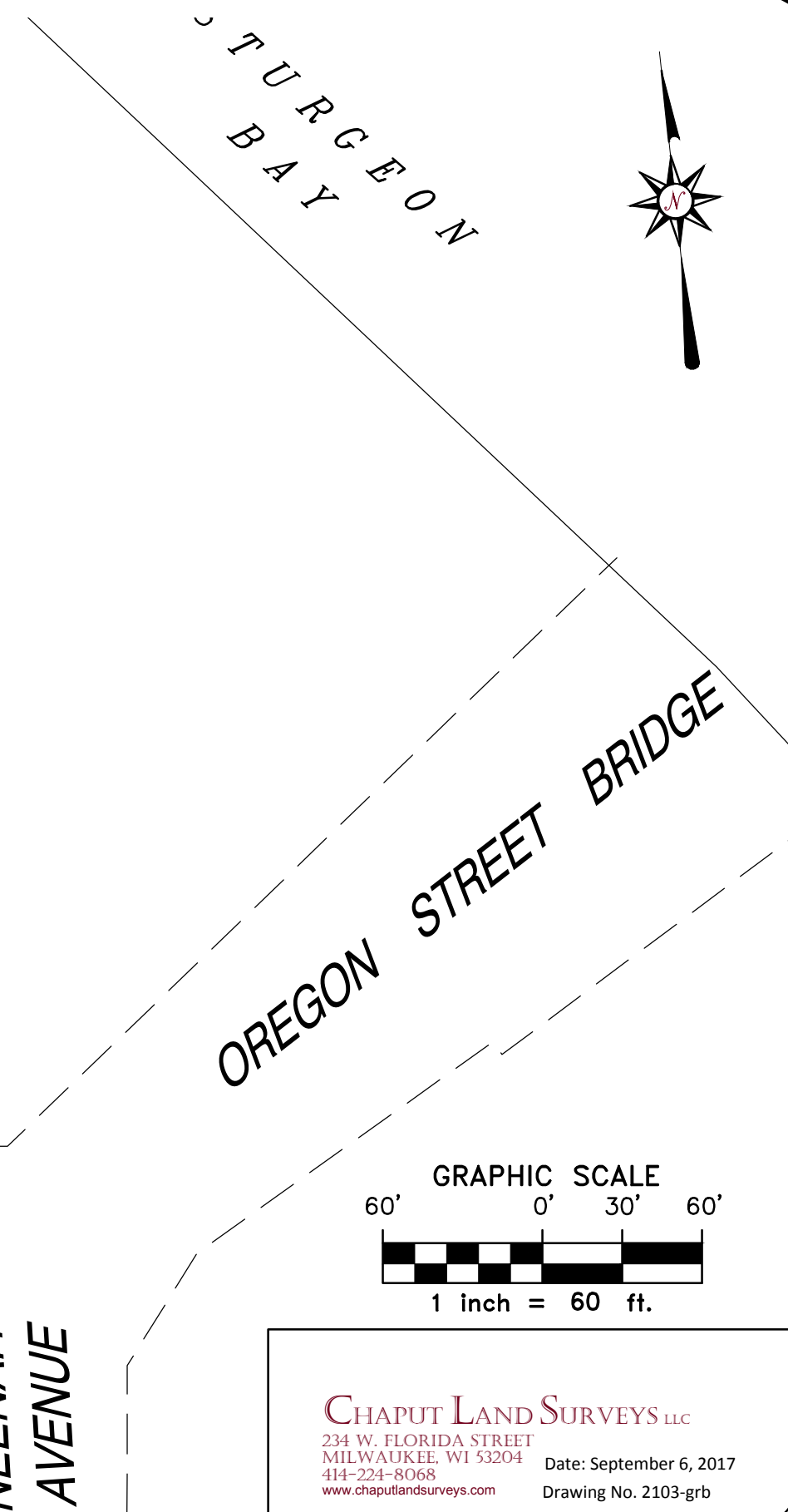
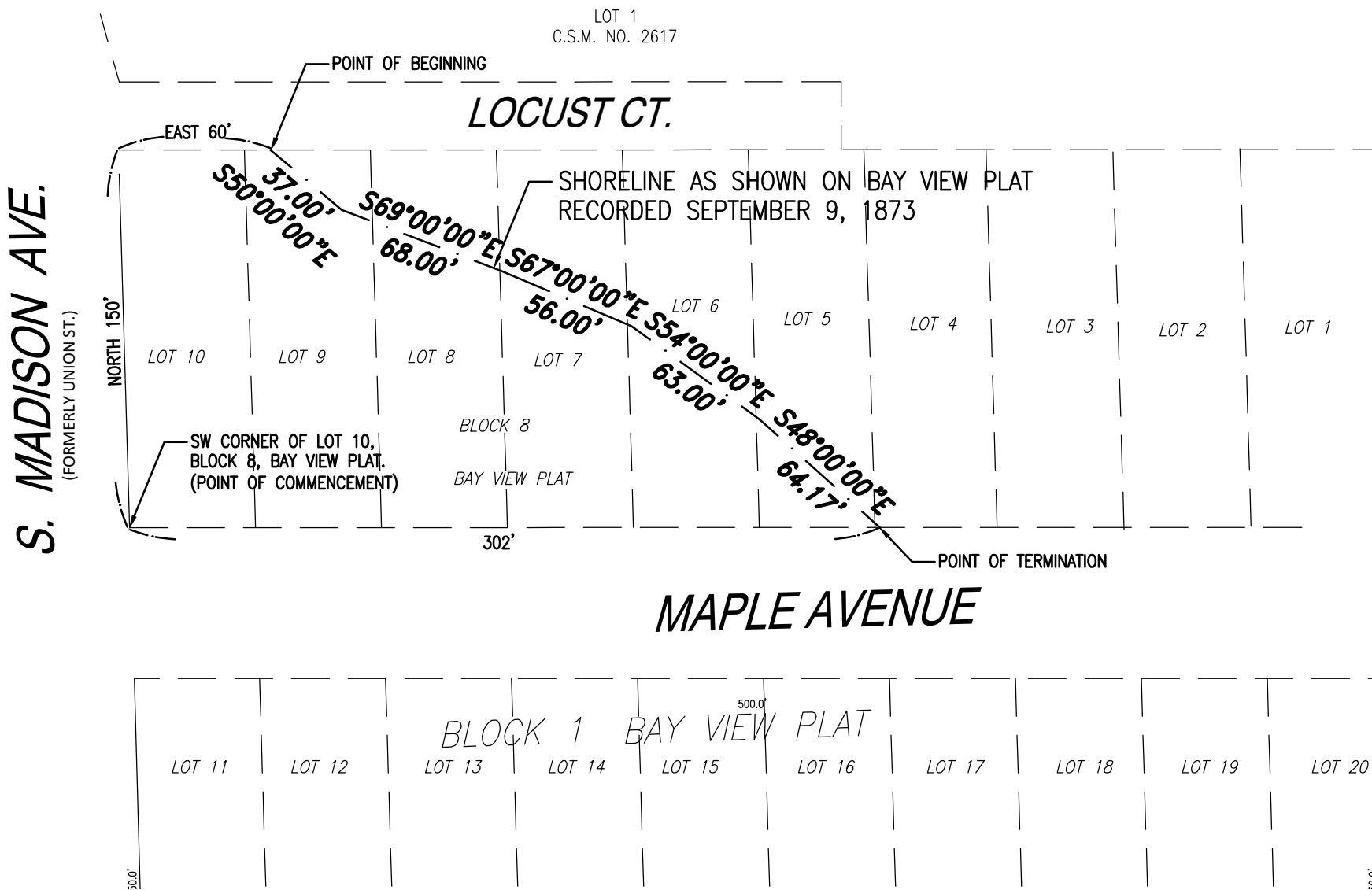


SHORELINE AS SHOWN ON
BAY VIEW PLAT
VILLAGE OF BAY VIEW PLAT - 1873

Part of Lots 4, 5, 6, 7, 8 & 9 in Block 8, Bay View Plat recorded September 9, 1873, being part of Government Lot 3 of Fractional Section 7, Town 27 North, Range 26 East in the City of Sturgeon Bay, Door County, Wisconsin, bounded and described as follows: Commencing at the Southwest corner of Lot 10, Block 8 in said Plat, thence North along the East line of South Madison Avenue, formerly Union Street 150 feet to a point on the South line of Locust Court said point also being the Northwest corner of said Lot 10; thence East along said South line 60 feet more or less to the Shoreline as shown on said plat and the point of beginning of lands hereinafter described; thence South 50°00'00" East along said line 37.00 feet to a point; thence South 69°00'00" East along said line 68.00 feet to a point; thence South 67°00'00" East along said line 56.00 feet to a point; thence South 54°00'00" East along said line 63.00 feet to a point; thence South 48°00'00" East along said line 64.17 feet to a point on the North line of Maple Avenue and the point of termination. Said point being 302' feet more or less Easterly from the point of Commencement.



CHAPUT LAND SURVEYS LLC
 234 W. FLORIDA STREET
 MILWAUKEE, WI 53204
 414-224-8068
 www.chaputlandsurveys.com

Date: September 6, 2017
 Drawing No. 2103-grb